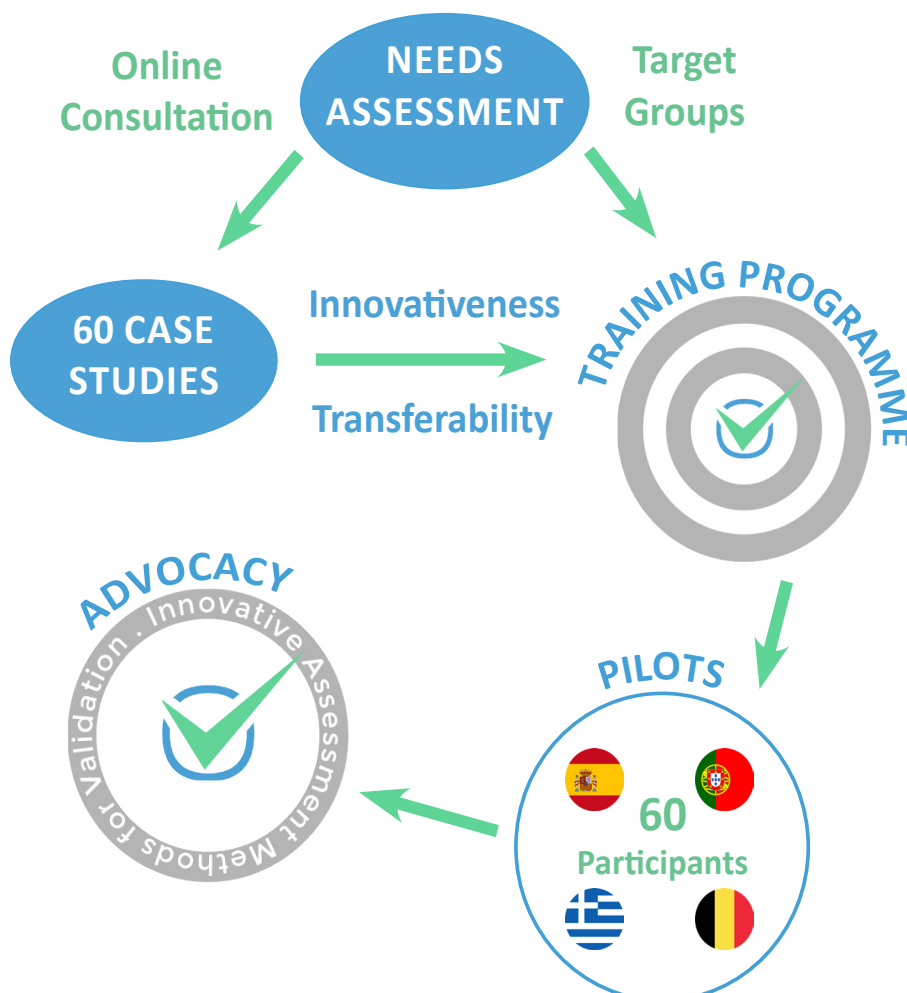


InnoVal (Innovative Assessment Methods for Validation) is an Erasmus+ KA2 project aiming to identify innovative and reliable assessment methods that can allow all learners to have a chance at validation of their skills and competences, with a special focus on the needs of disadvantaged groups.

## Project milestones

- ✓ **Needs Assessment Review:** The research phase
- ✓ **Toolbox:** Collection of case studies
- ✓ **Training Programme:** Development and piloting
- ✓ **Advocacy pack:** Educational stakeholders & policy makers



## Project partners



## Associate partner

| Bertelsmann Stiftung

## Facts

**Start:** October 2016

**End:** September 2018

**Coordinator:** Lifelong Learning Platform

**Consortium:** 6 partners from 5 EU countries

**Project website:** [inno-val.eu](http://inno-val.eu)

## How to get involved?

If you want to know more about this project and receive regular project updates, contact LLLP at [projects@lllplatform.eu](mailto:projects@lllplatform.eu)

Project number  
2016-1-BE02-KA202-017389

**epos**



Co-funded by the  
Erasmus+ Programme  
of the European Union